

BACHELOR IN MANAGEMENT (BSc)

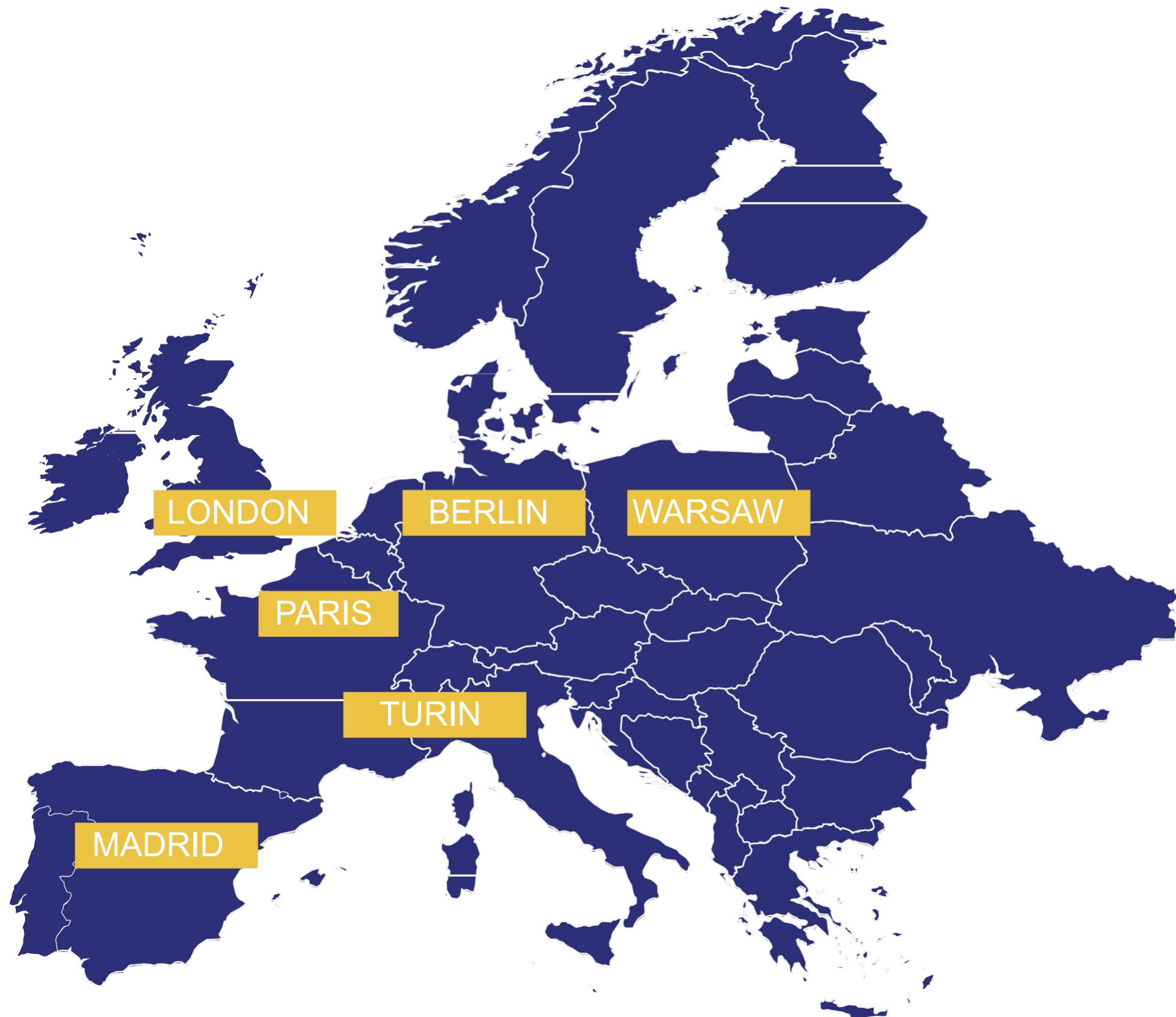


IT ALL STARTS HERE

affiliated to



BERLIN | LONDON | MADRID | PARIS | TURIN | WARSAW



ESCP Business School

**Driven by European values,
we inspire and educate business leaders
who will impact the world.**

- The World's 1st Business School (est. 1819)
- Cross-border multi-campus institution
- Nationally and Internationally accredited

ESCP

Quick facts

Business School of the World (est. 1819)
A full **portfolio** Bachelor, MiM, MScs, Executive Masters, EMBA, Global Executive PhD, custom and open programmes

European campuses in Berlin, London Madrid, Paris, Turin, and Warsaw and a branch campus in Dubai

academic alliances in Europe and the World in 48 countries

research-active professors representing 33 nationalities across our campuses

1st

5,000

high-level participants in customised training and executive education

6

8,500+

students in degree programmes representing 122 nationalities

145

73,000

active alumni in over 170 countries in the world

180

ESCP Ranking and Accreditation



Worldwide Financial Times

2nd
MASTER IN FINANCE
2022

5th
MASTER IN MANAGEMENT
2022

6th
EXECUTIVE MBA
2021

12th
EXECUTIVE EDUCATION
2022

ESCP benefits from the best international accreditations.
Our European campuses enjoy national recognition.



5 European Higher Ed
accreditations





Leading in a changing world

Live the world
in 3 countries for 3 years

Empower yourself
through multiple disciplines

Experience the business
world first-hand

➔ BACHELOR IN MANAGEMENT (BSc)

Bachelor in Management (BSc)

Main features

- **Three-year degree**, full-time programme (180 ECTS)
- **Multicultural** study track in one institution
- Curriculum in **Management** combined with **liberal arts** and **humanities**
- Innovative **Blended Learning Model**
- Taught in **English** with some classes in **French** or **Spanish**
- Language courses of **Spanish, Italian, French, German** and **Chinese**
- Compulsory **internships** and **social impact projects**
- Bachelor of Science in Management degree, **fully compliant with international standards**

Grade de Licence



Accreditation











Ranking 2022



Bachelor in Management (BSc)

Study-track options

1 YEAR	LONDON PARIS TURIN Language requirements London, Paris and Turin: English			
2 YEAR	MADRID PARIS TURIN Language requirements Madrid: English and Spanish Paris: English and French Turin: English			
3 YEAR	BERLIN PARIS LONDON Language requirements Berlin and London: English Paris: English and French			

Or to study one year at our **partner institution**, Tsinghua University in Beijing (exclusively available to residents of China).

Bachelor in Management (BSc)

Academic approach



PEDAGOGY

- Multinational teamwork
- Practical real-life cases and business simulations
- Strong interaction among the students and professors



INTERDISCIPLINARY APPROACH

- Combination of classic management topics with those from liberal arts and humanities as well as language courses



PERSONAL DEVELOPMENT

- In-depth development of written competencies, presentation techniques and rhetorical skills
- Collective projects to trigger student initiatives, developing creativity and entrepreneurial spirit



PROFESSIONAL EXPERIENCE

- Internships and social projects facilitated by our strong links to the corporate world

Bachelor in Management (BSc)

Blended learning model

BSc students will experience a modern and superior performance learning method through interactive applied social learning.



Bachelor in Management (BSc)

Academic year calendar



Bachelor in Management (BSc)

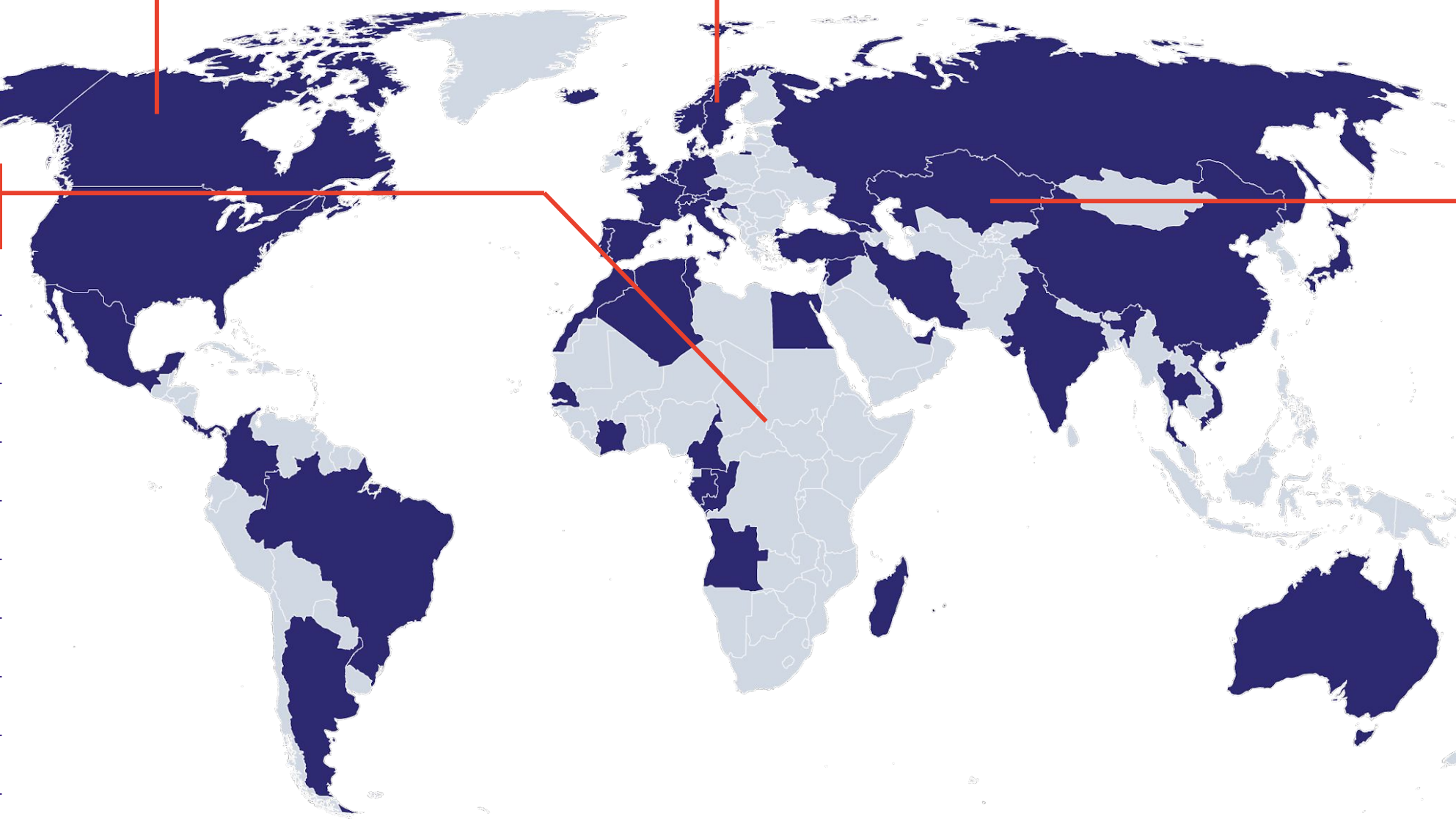
Curriculum

YEAR 1	YEAR 2	YEAR 3
Management, Economics & Law Modules <ul style="list-style-type: none"> • Introduction to European Business Administration & Organisations • Managerial Accounting • Micro-Economics • European Institutions and Comparative Political Systems • Fundamentals of Mathematics 1 • Statistics and Probability 	Management, Economics & Law Modules <ul style="list-style-type: none"> • Finance • Financial Accounting • Marketing • Macro-Economics • Contract & Business Law in Europe • International & European Business Law and Taxation • Fundamentals of Mathematics 2 • Advanced Statistical Methods 	Management, Economics & Law Modules <ul style="list-style-type: none"> • Operations Management and Business Information Systems • CSR and Business Ethics • International Economics • Electives, such as: Marketing & Sales – Finance – Management – Digitalisation – Human Resources – Entrepreneurship
Liberal Arts & Humanities Modules <ul style="list-style-type: none"> • Introduction to Psychology & Sociology • International Relations European & World History 	Liberal Arts & Humanities Modules <ul style="list-style-type: none"> • Key Scientific & Technological Issues in Business 	Liberal Arts & Humanities Modules <ul style="list-style-type: none"> • Electives, such as: History – Politics – Wealth of Nations – Negotiation – Human Behaviour – Self-Awareness
Languages & Personal Skills Modules <ul style="list-style-type: none"> • Presentation, Discussion & Rhetoric Skills • Computer Skills • Languages 	Languages & Personal Skills Modules <ul style="list-style-type: none"> • Intercultural Skills • Languages 	Languages & Personal Skills Modules <ul style="list-style-type: none"> • Academic Writing Skills • Languages
Collective Projects, Internships <ul style="list-style-type: none"> • Collective Project 1 • Internship (optional) 	Collective Projects, Internships <ul style="list-style-type: none"> • Collective Project 2 • Internship or Social Impact Project 	Collective Projects, Internships & Thesis <ul style="list-style-type: none"> • Business Game • Internship • Bachelor Thesis
60 ECTS	60 ECTS	60 ECTS



180 ECTS

Bachelor in Management (BSc) Class of 2024



79%

EUROPE

- Austria
- Belarus
- Belgium
- Bulgaria
- Croatia
- Czech Republic
- Denmark
- Estonia
- Finland
- France
- Germany
- Greece
- Hungary
- Ireland
- Italy
- Lithuania
- Luxembourg
- Monaco
- Netherlands
- Norway
- Poland
- Portugal
- Serbia
- Slovakia
- Spain
- Sweden
- Switzerland
- Ukraine
- United Kingdom

10%

**RUSSIA, ASIA
E OCEANIA**

- Australia
- Bangladesh
- China
- Hong Kong
- India
- Iran
- New Zealand
- Philippines
- Russia
- South Korea
- Taiwan
- Thailand
- Vietnam

5%

**AFRICA
& MIDDLE EAST**

- Algeria
- Angola
- Benin
- Cameroon
- Gabon
- Israel
- Laos
- Lebanon
- Madagascar
- Morocco
- South Africa
- Tunisia

6%

AMERICA

- Argentina
- Brazil
- Canada
- Chile
- Colombia
- Guatemala
- Mexico
- Panama
- Peru
- United States of America

64
COUNTRIES

Bachelor in Management (BSc)

Student life and associations

AGORA

Student council elected by the students that bridges the gap between the student body and the school administration.

SPORTS CLUBS AND ACTIVITIES

ESCP offers around 30 different disciplines, access to various sporting facilities, and organises an annual regatta, among other activities.

JUNIOR ENTERPRISE

A student-run business association which works with corporate clients across Europe on a wide range of business ventures.

STUDENT SOCIETIES' BOARD

Elected by the students, organises events which encourage networking amongst different intakes and nationalities.

CALL ON'U

Every year at the NMUN in New York City, around 4,000 students from top universities worldwide embody diplomats and represent their country in various UN committees such as the Security Council or UNICEF.

Bachelor in Management (BSc)

Career Service Activities

WORKSHOPS

- Career Strategy, CV & Cover Letter
- Digital Reputation (LinkedIn & other social networks)
- How to apply for job offers
- Preparation for interviews

NETWORKING & CORPORATE EVENTS

- Alumni Testimonials
- Corporate Testimonials
- Company Presentations
- Career Fairs (4 campuses)

ONE TO ONE SUPPORT

- Advice meetings
- CV check
- Mock Interviews
- European Career Service



Bachelor in Management (BSc)

After graduation options



Join the best Masters programmes in the world and take advantage of our network of **partner universities across the globe**



Apply for one of **our specialised MSc programmes**



Try **corporate life** and/or engage in **graduate programmes**



GRADUATED STUDENTS 2021

50%

chose to continue with a **Master degree** in a renowned institution

45%

98% PLACEMENT

chose to start an **international professional career**

**5% gap year*

Bachelor in Management (BSc)

International professional careers



COMPANY INDUSTRIES

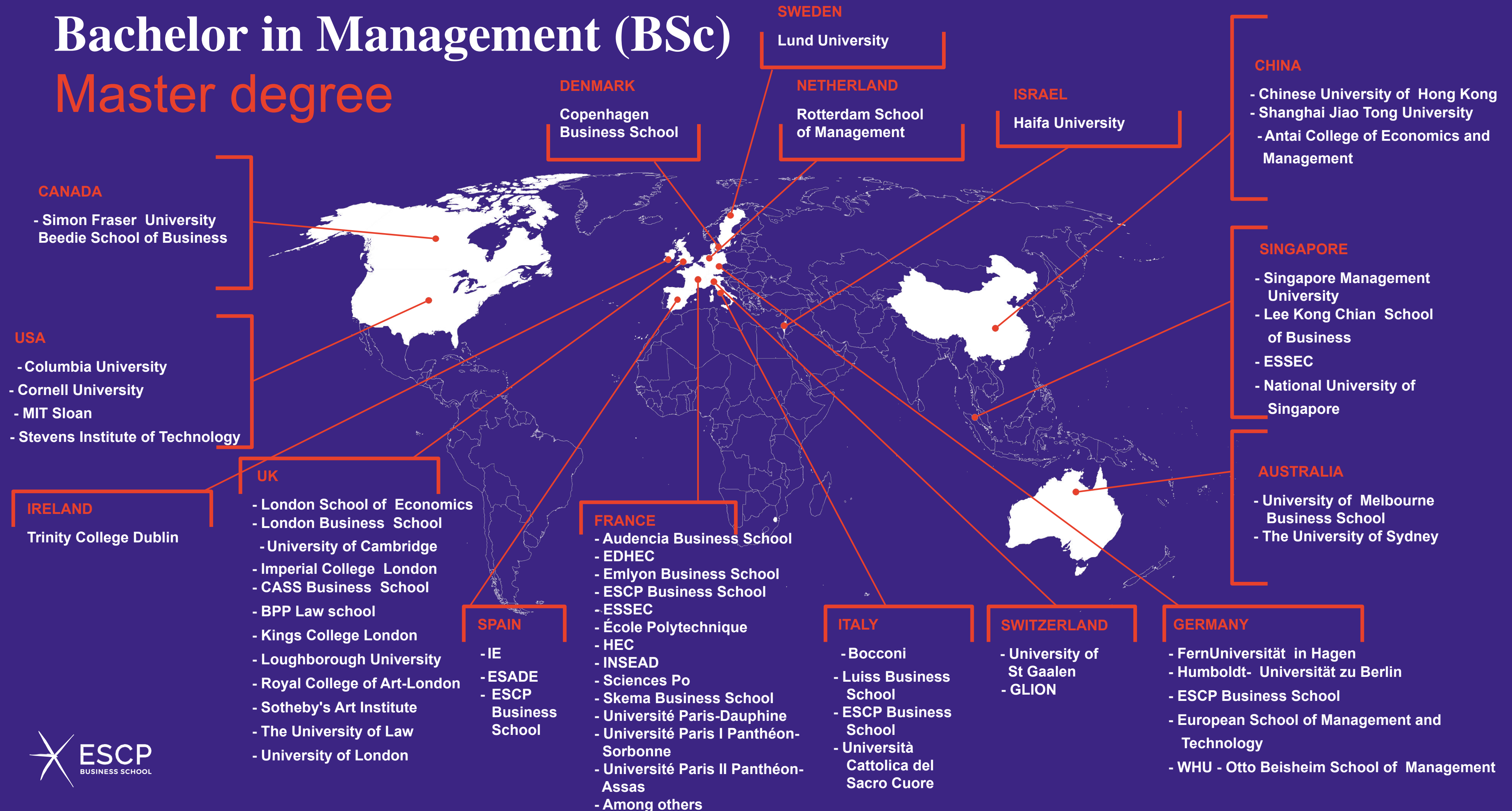
- Arts & Entertainment
- Automotive
- Banking & Financial Services
- Consulting
- Consumer Goods
- Food & Beverage
- Insurance
- IT & E-commerce
- Luxury Goods
- Manufacturing
- Pharmaceutical
- Publishing
- Real Estate
- Sports
- Tourism & Hospitality
- Transportation & Logistics
- Other Industries

COMPANY DEPARTMENTS

- Finance
- IT
- Marketing
- Purchasing & Logistics
- Management

Bachelor in Management (BSc)

Master degree



CANADA

- Simon Fraser University Beedie School of Business

USA

- Columbia University
- Cornell University
- MIT Sloan
- Stevens Institute of Technology

IRELAND

- Trinity College Dublin

UK

- London School of Economics
- London Business School
- University of Cambridge
- Imperial College London
- CASS Business School
- BPP Law school
- Kings College London
- Loughborough University
- Royal College of Art-London
- Sotheby's Art Institute
- The University of Law
- University of London

SPAIN

- IE
- ESADE
- ESCP Business School

FRANCE

- Audencia Business School
- EDHEC
- Emylon Business School
- ESCP Business School
- ESSEC
- École Polytechnique
- HEC
- INSEAD
- Sciences Po
- Skema Business School
- Université Paris-Dauphine
- Université Paris I Panthéon-Sorbonne
- Université Paris II Panthéon-Assas
- Among others

ITALY

- Bocconi
- Luiss Business School
- ESCP Business School
- Università Cattolica del Sacro Cuore

SWITZERLAND

- University of St Gallen
- GLION

GERMANY

- FernUniversität in Hagen
- Humboldt- Universität zu Berlin
- ESCP Business School
- European School of Management and Technology
- WHU - Otto Beisheim School of Management

DENMARK

- Copenhagen Business School

SWEDEN

- Lund University

NETHERLAND

- Rotterdam School of Management

ISRAEL

- Haifa University

CHINA

- Chinese University of Hong Kong
- Shanghai Jiao Tong University
- Antai College of Economics and Management

SINGAPORE

- Singapore Management University
- Lee Kong Chian School of Business
- ESSEC
- National University of Singapore

AUSTRALIA

- University of Melbourne Business School
- The University of Sydney

Bachelor in Management (BSc)

Reasons to choose our programme



GENERAL MANAGEMENT PROGRAMME

The programme gives you the skills you need to succeed in any business career, whether in finance, marketing, consulting or another field.



DISCIPLINES BEYOND MANAGEMENT

To give you a better understanding of the world in which businesses evolve, you study subjects such as psychology, sociology and world history. You will also take language classes, in addition to core management subjects.



BUSINESS SCHOOL PEDAGOGY

We make sure that what you study combines theory and practice and is directly relevant to your future career.



INTERNATIONAL EXPOSURE

You will experience Europe firsthand by studying every year in a different country, at a different ESCP campus – without having to compromise on academic excellence.

Bachelor in Management (BSc)

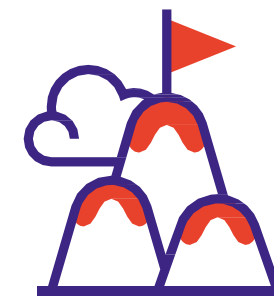
Student profile



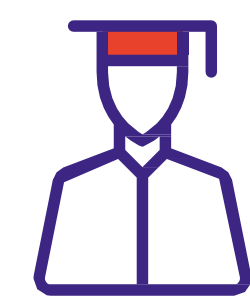
HIGH-CALIBRE
STUDENTS WHO
ASPIRE TO TOP
INTERNATIONAL
CAREERS



KEEN TO
STUDY AND
EXPERIENCE
DIFFERENT
CULTURES AND
LANGUAGES



ABLE TO
ADAPT AND
THRIVE IN
NEW OR
CHALLENGING
SITUATIONS



LOOKING
TO BUILD
CONFIDENCE,
TO BECOME
AUTONOMOUS

Bachelor in Management (BSc)

Application process



1

STEP

ONLINE APPLICATION*

- Academic transcripts of the last 3 years
- Secondary school examination certificates (if already held, or upon receipt)
- Personal statement in English
- Academic reference
- English language test scores (if required): IELTS 6 / TOEFL iBT 90 / CAE 180
- CV/resume
- Supporting documents for additional languages spoken
- Copy of ID/passport

2

STEP

PERSONAL INTERVIEW

If your initial application is successful, you will be invited to attend an oral interview with at least two people, including faculty members.

The interview is designed to assess your motivation, the match between your profile and your curriculum, and your personality (adaptability, maturity, openness to an international experience, etc.)

Whilst we prefer to meet students in person, distance interviews are a perfectly viable option.

3

STEP

ADMISSIONS RESULTS

The School will send you the admission results and, if you are admitted, you will be offered:

- A place (unconditional or conditional) on the programme with a deadline by which to respond
- Your study track for the first two years. The third campus will be determined later as it depends on your choice of specialisation.

* Students who do not apply through our website will supply the documents as requested by Parcoursup, UCAS or Common App. The School will assess these documents and may require the additional information as per our direct application.

Bachelor in Management (BSc)

Fees and scholarship

SCHOLARSHIP PROGRAMME

- Scholarships are assigned based on different criterias that includes merit, diversity and financial needs
- Scholarships can cover from 10% to 50% of the tuition fees
- Scholarships are renewable each year on condition of academic achievement, behaviour and involvement in the ESCP community

FEES FOR
THE ACADEMIC
YEAR 2023/2024

APPLICATION FEE

€60 admission fee

REGISTRATION FEE

€360 first year only

TUITION FEES (European)*

€15,920 / year

TUITION FEES (NON-European)

€22,250 / year

*To be eligible for European fees, you must be a European citizen holding a valid European passport

Bachelor in Management (BSc)

Application deadlines – Applications now open!

1 ONLINE APPLICATION

STEP

2022	2022	2023	2023	2023	2023	2023	2023	2023
30	27	8	29	5	19	9	30	21
OCT	NOV	JAN	JAN	MAR	MAR	APR	APR	MAY

2 PERSONAL INTERVIEW

STEP

2022	2022	2023	2023	2023	2023	2023	2023	2023
10	8-9	19-20	9-10	14-15	30-31	20-21	11-12	31
NOV	DEC	JAN	FEB	MAR	MAR	APR	MAY	MAY

Bachelor in Management (BSc)

Contacts

BERLIN CAMPUS RECRUITMENT & ADMISSIONS OFFICE

ESCP - Berlin Campus
Heubnerweg 8 -10, 14059 Berlin,
Deutschland



**GRACE
NGUYEN**

Tel +49 30 32 007 181
bachelorberlin@escp.eu



**CLARISSA
STEFFAN**

Tel +49 30 32 007 162
bachelorberlinadmissions@escp.eu

THANK
YOU



JOIN US

www.facebook.com/groups/ESCPBachelorInManagement/



FOLLOW US

[@escpbs_bsc](https://www.instagram.com/escpbs_bsc)



READ US

www.escpbachelorblog.com



affiliated to



IT ALL STARTS HERE

BERLIN | LONDON | MADRID | PARIS | TURIN | WARSAW